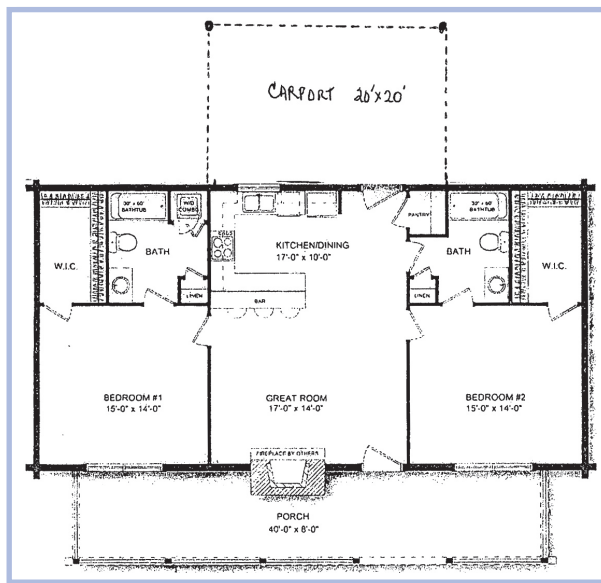




**Golden Eagle LOG HOMES**  
Family Owned & Operated Since 1966

11



## 205 Willow Oak Lane

### Trinity



#### FEATURES

- 2 Bedroom, 2 Bath, approx. 1,200 sq.ft.
- 8"x8" Solid White Pine Log on Exterior Walls
- R-Panel Metal Roof
- Wood Burning Fireplace with Stone Facing
- Tongue and Groove Siding on Interior Walls
- Custom Built Cabinetry
- Granite Counter Tops in Kitchen
- Open Cell Foam Spray Attic Insulation
- "Texas Star" Fiberglass Entry Door
- Low E Windows
- StrucSure Home Warranty

#### Suppliers & Sub-Contractors:

Boral Brick • McCoys • Enviro-Tech Insulation • Sherwin Williams

#### Directions:

From Lufkin Loop, go Hwy 94 South toward Trinity (about 33 miles). In Trinity turn right on W. 2nd St. Take the first left onto N. Magee Ave. Turn right onto W. 1st St/US-287. Turn left on TX-94. Turn left onto FM-3188. Turn right onto S Walnut Dr. Take 2nd right onto Loblolly Trail. Take first left onto Willow Oak Lane.



Rick & Cindy Renfro  
866-594-7335

In the Trinity area since 2000, Christian Home Builders, Inc. strives to conduct business ethically and morally. Our desire is to emulate the life and works of Jesus Christ by building relationships with our clients based on honesty and integrity and throughout those relationships, build our clients a home of which they can be proud. We are proud to be the authorized dealer for Golden Eagle Log Homes in Texas. Golden Eagle Log Homes is a family owned business operating throughout the United States since 1966 and boast the most complete log home package in the industry.

[www.christianhomebuilders.com](http://www.christianhomebuilders.com)

**Christian Home Builders**

Building relationships with our clients based on honesty and integrity

